



MahaRERA No. P51700046293
Website <https://maharera.mahaonline.gov.in>



**SHREEJI
GREENS**

BADLAPUR (E)

Breathe in the Freshness of
Nature!



UNIQUE OXY FRESH LIVING IN THE LAP OF NATURE



SHREEJI
GREENS
BADLAPUR (E)

Live a Life of Luxury Surrounded by *Greenery*





**SHREEJI
GREENS**

1-2 BHK Homes
with Dining &
Master Bedroom



SITE LAYOUT

SR NO.	TITLE
1	GARDEN ENTRANCE
2	TREE PLANTATION
3	KIDS PLAY AREA
4	SR. CITIZEN SITOUT AREA
5	GARDEN AREA
6	CLUB HOUSE
7	GAZEBO
8	MAIN ENTRY GATE
9	ENTRY GATE NO. 02





The Modern
Club House



**SHREEJI
GREENS**

BADLAPUR (E)

RECREATION FOR LIFETIME

- ◆ Landscape Garden
- ◆ Senior Citizen Sit out
- ◆ Jogging Track
- ◆ Open Air Yoga and Meditaton Space
- ◆ Designer Club House
- ◆ AC Gymnasium
- ◆ Indoor Games
- ◆ Children's Play Park with Play Equipments
- ◆ Gazebo with Seating
- ◆ Society Office
- ◆ Decorative Pargola





**SHREEJI
GREENS**

BADLAPUR (E)

- ◆ Attractive Main Gate
- ◆ Security Cabin
- ◆ Wide Road

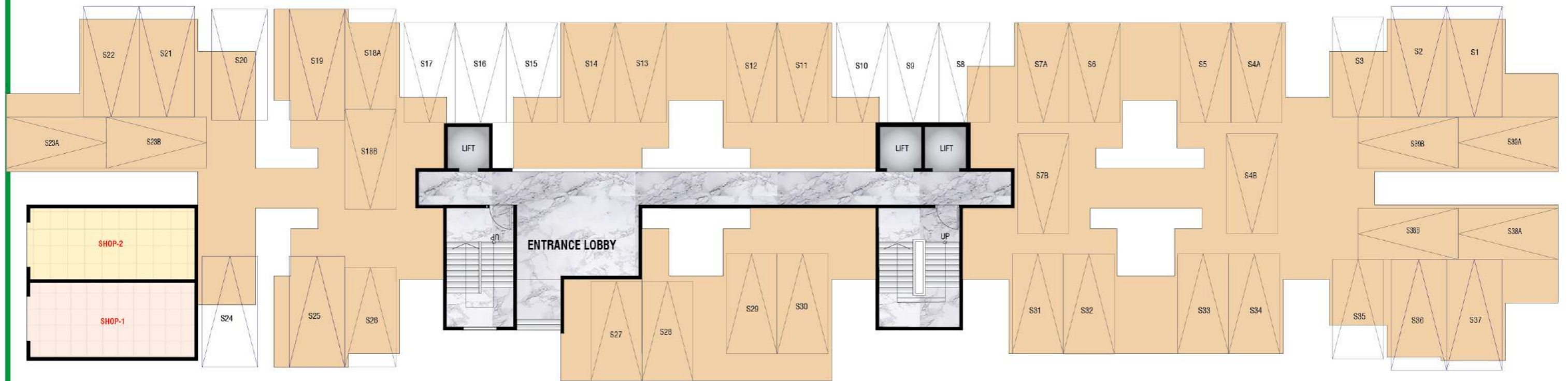
The Grand
Entrance Gate





SHREEJI GREENS

BADLAPUR (E)



Ground Floor Plan



SHREEJI GREENS

BADLAPUR (E)



Typical 2nd, 3rd, 4th, 5th, 6th, 7th, 9th, 10th, 11th & 12th Floor Plan





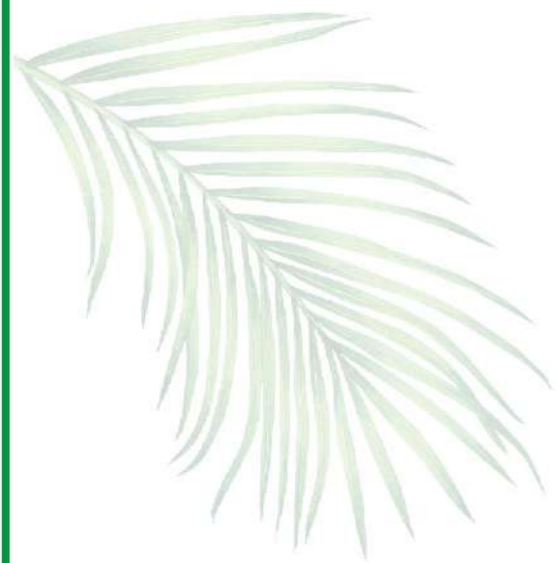
SHREEJI GREENS

BADLAPUR (E)



8th, Floor Plan



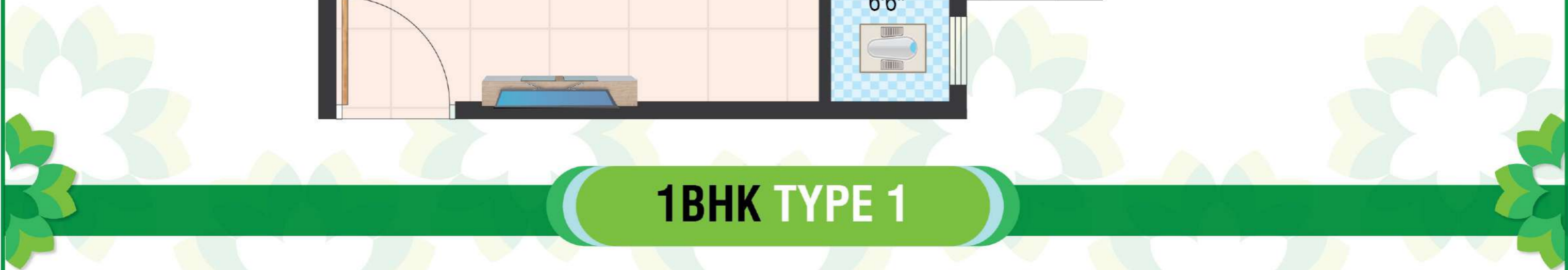


**SHREEJI
GREENS**

BADLAPUR (E)

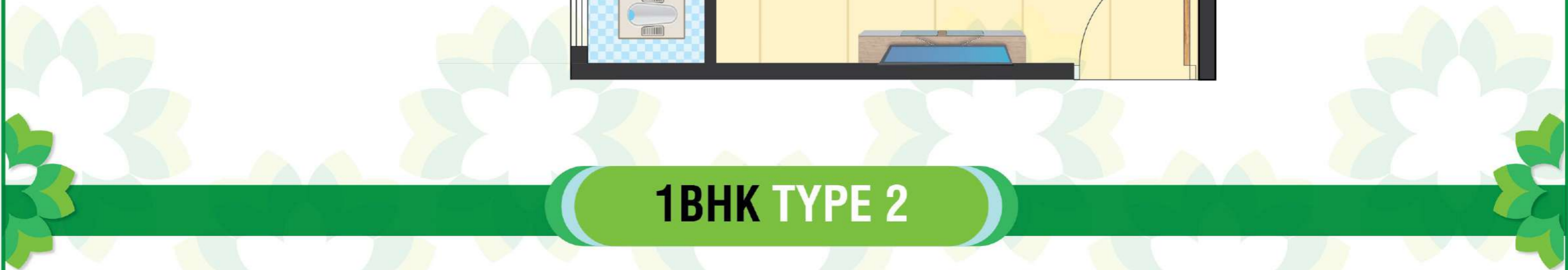


1BHK TYPE 1





1BHK TYPE 2





**SHREEJI
GREENS**

BADLAPUR (E)



2BHK TYPE 1



**SHREEJI
GREENS**

BADLAPUR (E)



2BHK TYPE 2





*Map not to scale



SHREEJI GREENS

BADLAPUR (E)



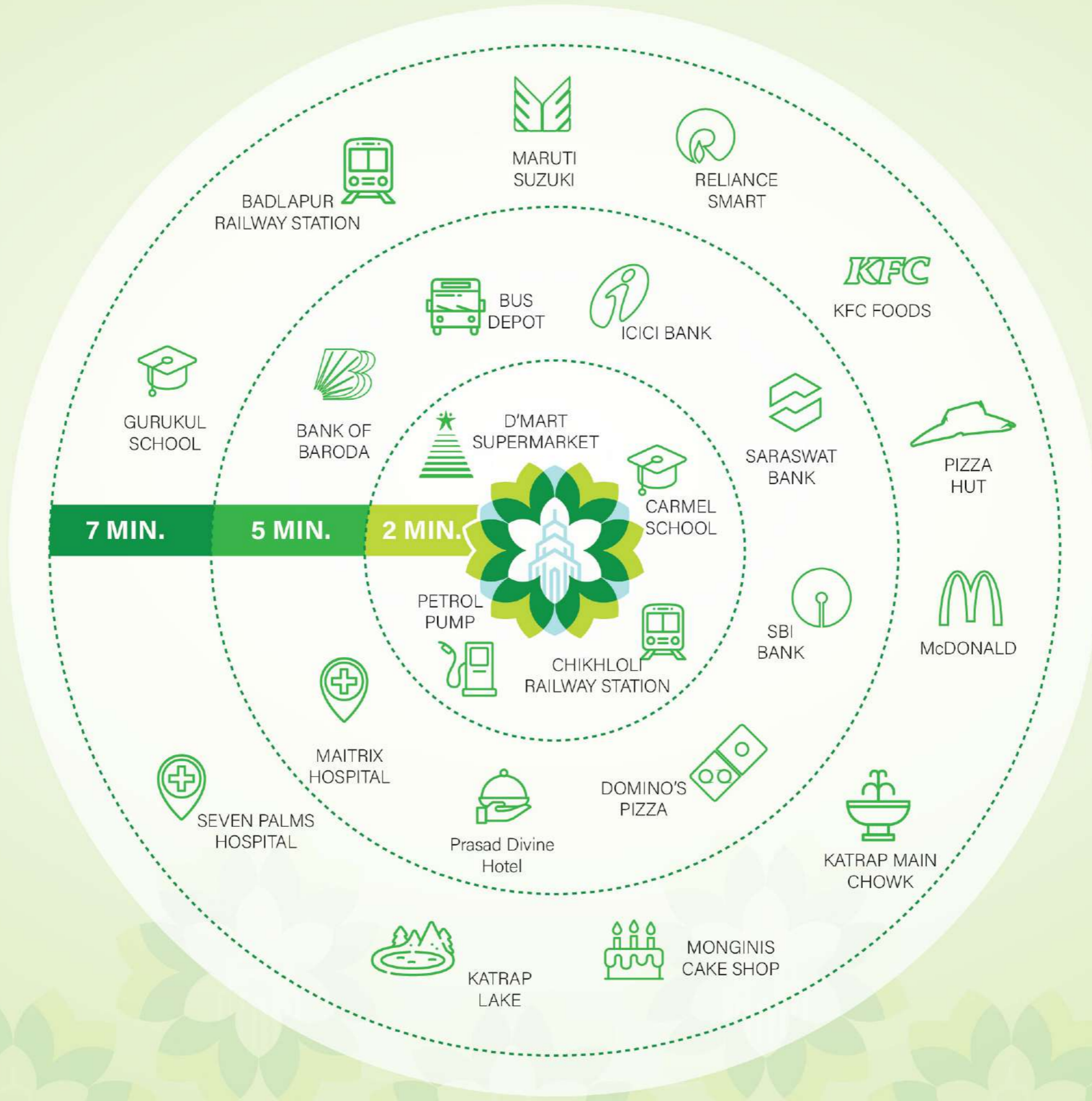
CHIKHLOLI-KATRAPHILL





SHREEJI GREENS

BADLAPUR (E)




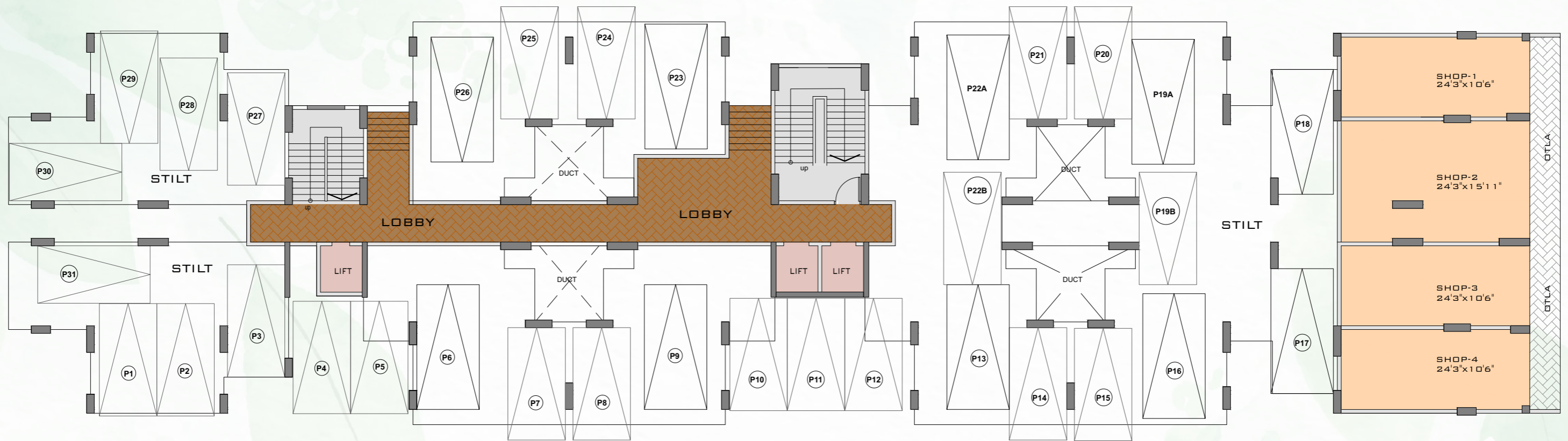
खुशियों से बढ़कर



SHREEJI
— MEADOWS —
the land of prosperity

1BHK + Dining & Master Bedroom | 2BHK with Dining Space

 Adjacent to Indian Petrol Pump
Katrap, Badlapur (East)



GROUND FLOOR PLAN

BUILDING NO: 1



Disclaimer : The visuals and information contained in this brochure are indicative of the kind of development that is proposed. Subject to approval of the authorities or in the interest of the continuing improvement, the Promoters/Developers reserve the right to change plans, specifications, or features, without prior notice or obligation. This brochure is issued for guidance only and does not constitute part of an offer or contract.





TYPICAL 1ST-7TH & 9TH-11TH FLOOR PLAN FLOOR

BUILDING NO: 1



Disclaimer : The visuals and information contained in this brochure are indicative of the kind of development that is proposed. Subject to approval of the authorities or in the interest of the continuing improvement, the Promoters/Developers reserve the right to change plans, specifications, or features, without prior notice or obligation. This brochure is issued for guidance only and does not constitute part of an offer or contract.

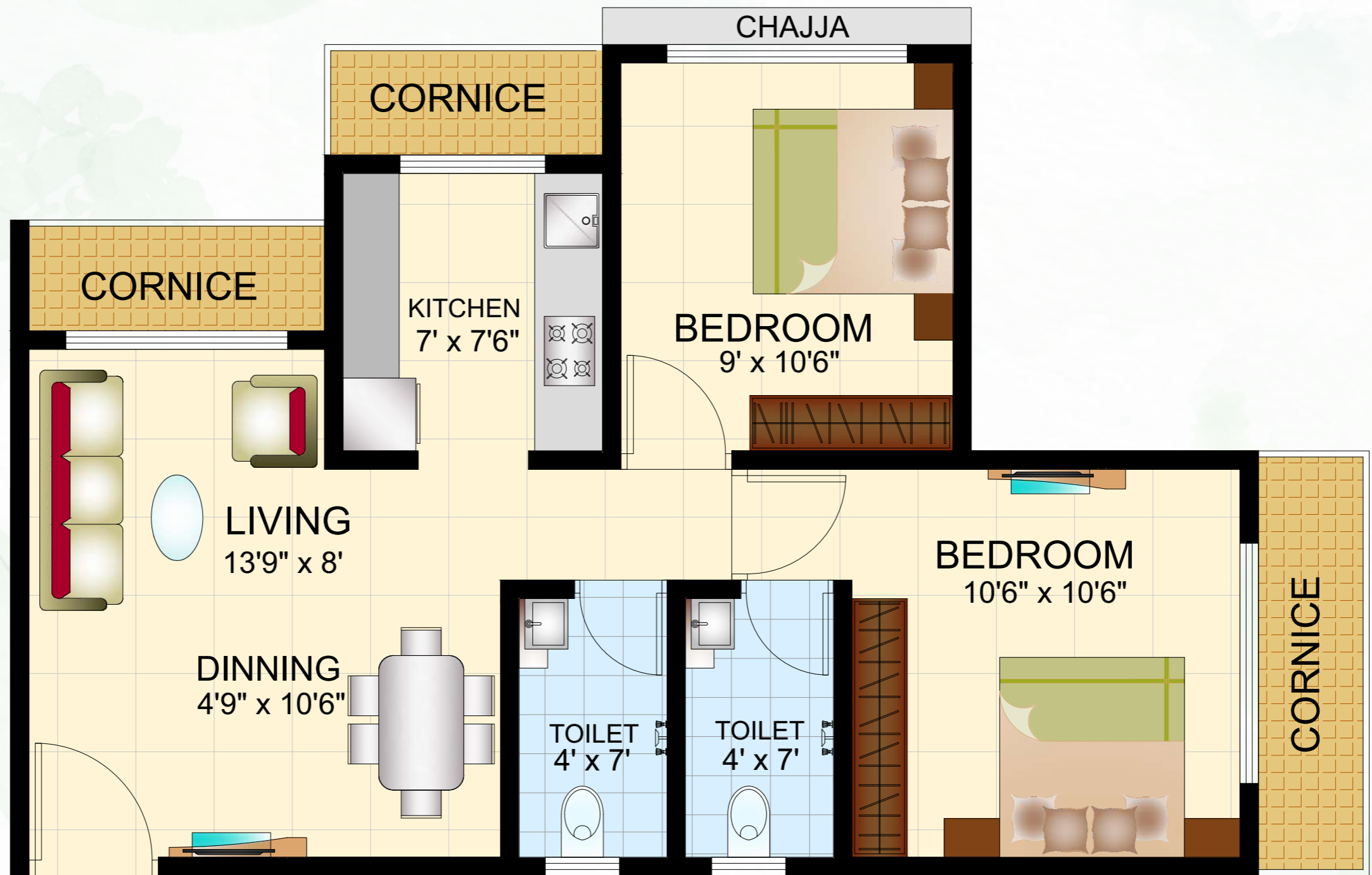


8TH FLOOR PLAN

BUILDING NO: 1



Disclaimer : The visuals and information contained in this brochure are indicative of the kind of development that is proposed. Subject to approval of the authorities or in the interest of the continuing improvement, the Promoters/Developers reserve the right to change plans, specifications, or features, without prior notice or obligation. This brochure is issued for guidance only and does not constitute part of an offer or contract.



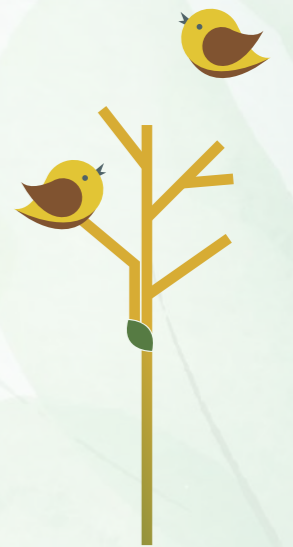
2BHK WITH DINNING SPACE

Disclaimer : The visuals and information contained in this brochure are indicative of the kind of development that is proposed. Subject to approval of the authorities or in the interest of the continuing improvement, the Promoters/Developers reserve the right to change plans, specifications, or features, without prior notice or obligation. This brochure is issued for guidance only and does not constitute part of an offer or contract.

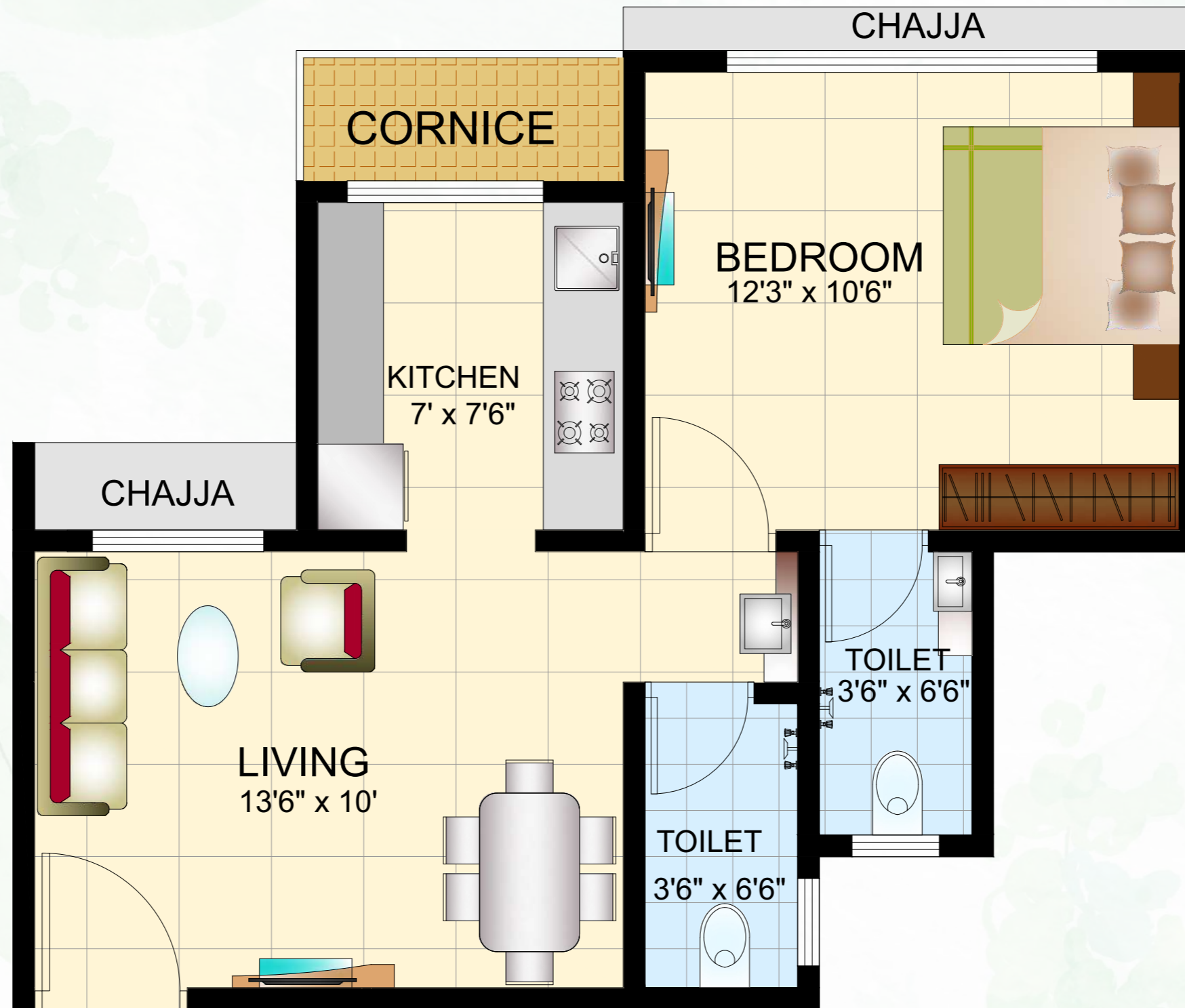


SHREEJI
MEADOWS
the land of prosperity

2BHK ISOMETRIC VIEW



Disclaimer : The visuals and information contained in this brochure are indicative of the kind of development that is proposed. Subject to approval of the authorities or in the interest of the continuing improvement, the Promoters/Developers reserve the right to change plans, specifications, or features, without prior notice or obligation. This brochure is issued for guidance only and does not constitute part of an offer or contract.




SHREEJI
 MEADOWS
the land of prosperity

1BHK WITH DINNING SPACE & MASTER BEDROOM

Disclaimer : The visuals and information contained in this brochure are indicative of the kind of development that is proposed. Subject to approval of the authorities or in the interest of the continuing improvement, the Promoters/Developers reserve the right to change plans, specifications, or features, without prior notice or obligation. This brochure is issued for guidance only and does not constitute part of an offer or contract.





SHREEJI
MEADOWS
the land of prosperity

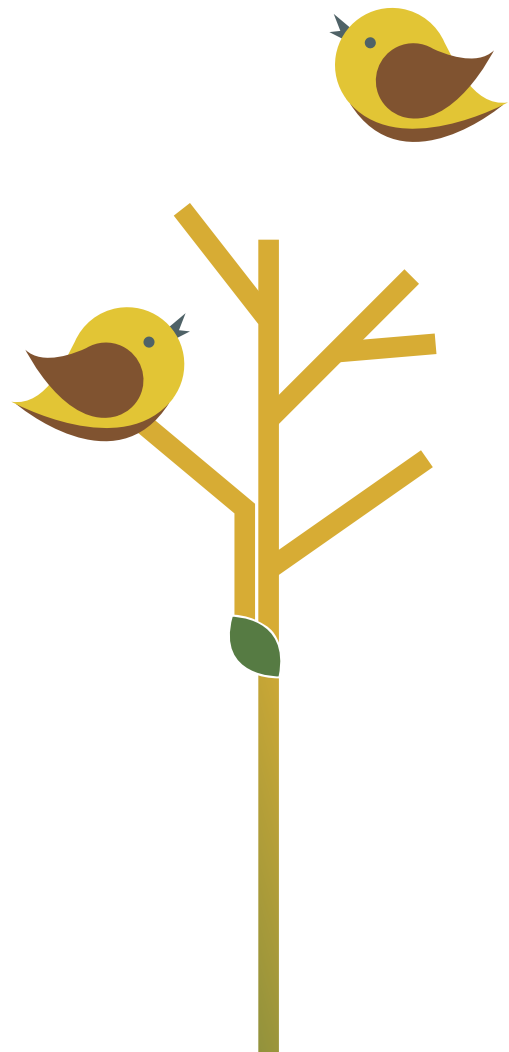
1BHK ISOMETRIC VIEW



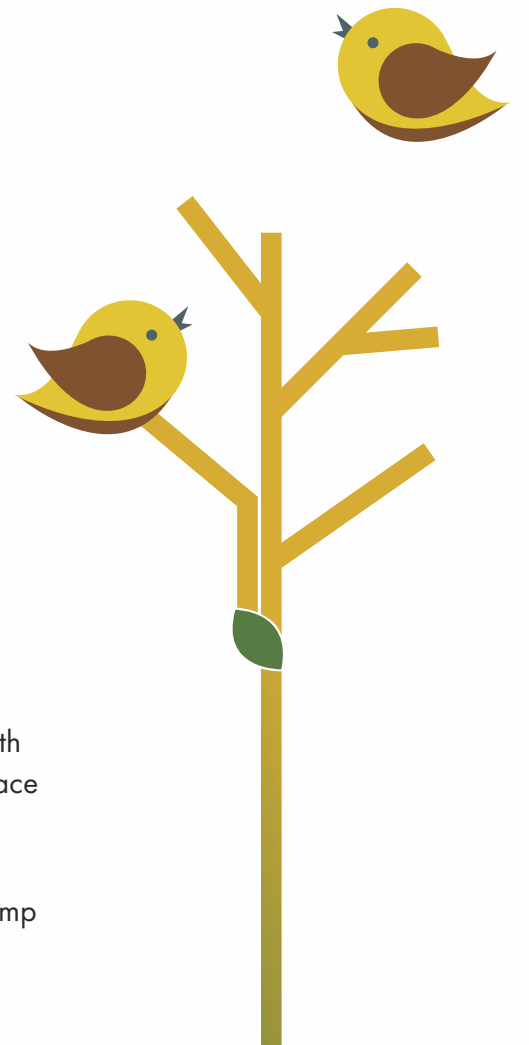
Disclaimer : The visuals and information contained in this brochure are indicative of the kind of development that is proposed. Subject to approval of the authorities or in the interest of the continuing improvement, the Promoters/Developers reserve the right to change plans, specifications, or features, without prior notice or obligation. This brochure is issued for guidance only and does not constitute part of an offer or contract.




www.shreejilifespaces.in



खुशियों से बढ़कर



1BHK + Dining & Master Bedroom | 2BHK with Dining Space

 Adjacent to Indian Petrol Pump
Katrap, Badlapur (East)

Living @ Shreeji Meadows

A life complete

They say the Universe is ready to give you what you want. You just have to ask. Shreeji Meadows is that perfect home that has literally everything you've always wanted. This time we assisted the Universe in making your dream home come true.

Right from choosing the location, preserving and enhancing the natural surroundings, to incorporating the smallest of details that make life beautiful, healthful and comfortable, we have enjoyed creating the living experience called Shreeji Meadows.

Located in the midst of modern comforts and conveniences, Shreeji Meadows is enveloped in its own aura of tranquility. The trendiest of malls and oldest of temples, the best school, hospital and the loveliest gardens are within minutes' distance.

Within its folds, Shreeji Meadows offers residences that are bright, airy and conversing with the trees and the skies. To the old it offers serenity, to the little ones it shows a world of fun and learning. To those in between, Shreeji Meadows offers positivity, romance and future.



Here
**Peace
and Luxury**
live together

In a decade the world has changed a lot. What has not changed is this part of Badlapur Shreeji Meadows. Well known to the Mumbaiker for its luxurious and peaceful location, Shreeji Meadows is back with the bang. presenting the Shreeji Meadows



Clever Homes for a comfortable life

Crafted to provide you with a life of peace, so close and yet far from the busy world outside, Shreeji Meadows has gorgeous and thoughtfully designed 1 BHK with Master Bedroom and 2 BHK with Dining Space apartments that will make your lifestyle dream a reality.

Shreeji Meadows offers all the comforts required for a blissful life like quality construction, elegant and modern building design with breezy surroundings. In addition it has modern amenities like landscaped gardens, a play area, parking area and many more, along with superb connectivity and gorgeous, lush environment.



a life
harmonized with
tunes of nature

Wake up each day to the melodious sound of nature with Shreeji Meadows. Let the sweet songs of birds, the swish of the trees and the sounds of the gentle breeze enlighten your life and let you start your day with a smile.







Lifestyle Amenities

RECREATION FOR LIFETIME

- Landscape Garden
- Senior Citizen Sit out
- Jogging Track
- Open air Yoga and Meditation Space
- Designer Club House
- A Community / Multipurpose Hall
- AC Gymnasium
- Indoor Games
- Children's Play Park with Play Equipments
- Gazebo with Seating
- Society Office
- Decorative Pargola

ECO FRIENDLY FEATURES

- Tree plantation
- Green & Peaceful Surrounding

YOUR CONVENIENCES

- Ample Parking
- Branded Lift
- Power backup for Lifts and common area
- Ample lighting for Lifts and common area

AMBIENCE FOREVER

- Grand Entrance Gate
- Attractive Elevation
- Decorative Entrance Lobby

SAFETY & SECURITY

- Fire fighting System
- CCTV Camera at Main Gate & Parking
- Security Cabin

Morden comfort for
perfect lives

Shreeji Meadows is well equipped with a plethora of modern amenities to enhance the lifestyle experiences of its residents and provide them the best comforts they could ask for.



Image for representative purpose only



*Artistic Rendition. Actual site may differ.



A home where
**nature will be
your best friend**

You'll form many friendships here. However the one you will cherish the most will be your friendship with nature. Shreeji Meadows is a secure gated community in the heart of city yet away from the commotion of city life. It is located in an expanse of natural beauty. With large open spaces, and a green cover that gives you a healthy environment to live in. Unwind yourself with recreational pursuits and experience comfortable living.





Specification

R.C.C.

| Earthquake resistant structure.

Door:

| Main door with decorative lamination finish and internal wooden door.
| Granite frame for all the doors of bath and WC.
| Wooden door frames for all rooms.
| Main door with good quality night latch and decorative handle.

Electrical:

| Concealed copper wiring with reputed brand switches, TV cable points in living room.

Water Tank:

| Underground & overhead tank with adequate storage capacity.

Flooring:

| 2'x2' Vitrified Flooring tiles in all the rooms.

Bath / WC:

| Concealed plumbing with good quality sanitary fittings.
| PVC plumbing fittings.
| Glazed tiles up to full height.
| Ceramic tiles flooring in bath & WC.
| Good quality aluminium louvers in bath & WC.

Kitchen:

| Granite kitchen platform with stainless steel sink.
| Glazed tiles upto beam level above kitchen platform.

Windows:

| Powder coated aluminium sliding windows with glass in living room, bedroom & kitchen.

Wall Finish:

| Internal walls painted with paint.
| External wall coated with paint.

Terrace:

| Special water proofing treatment with China Chips.



1 BHK + Dining & Master Bedroom



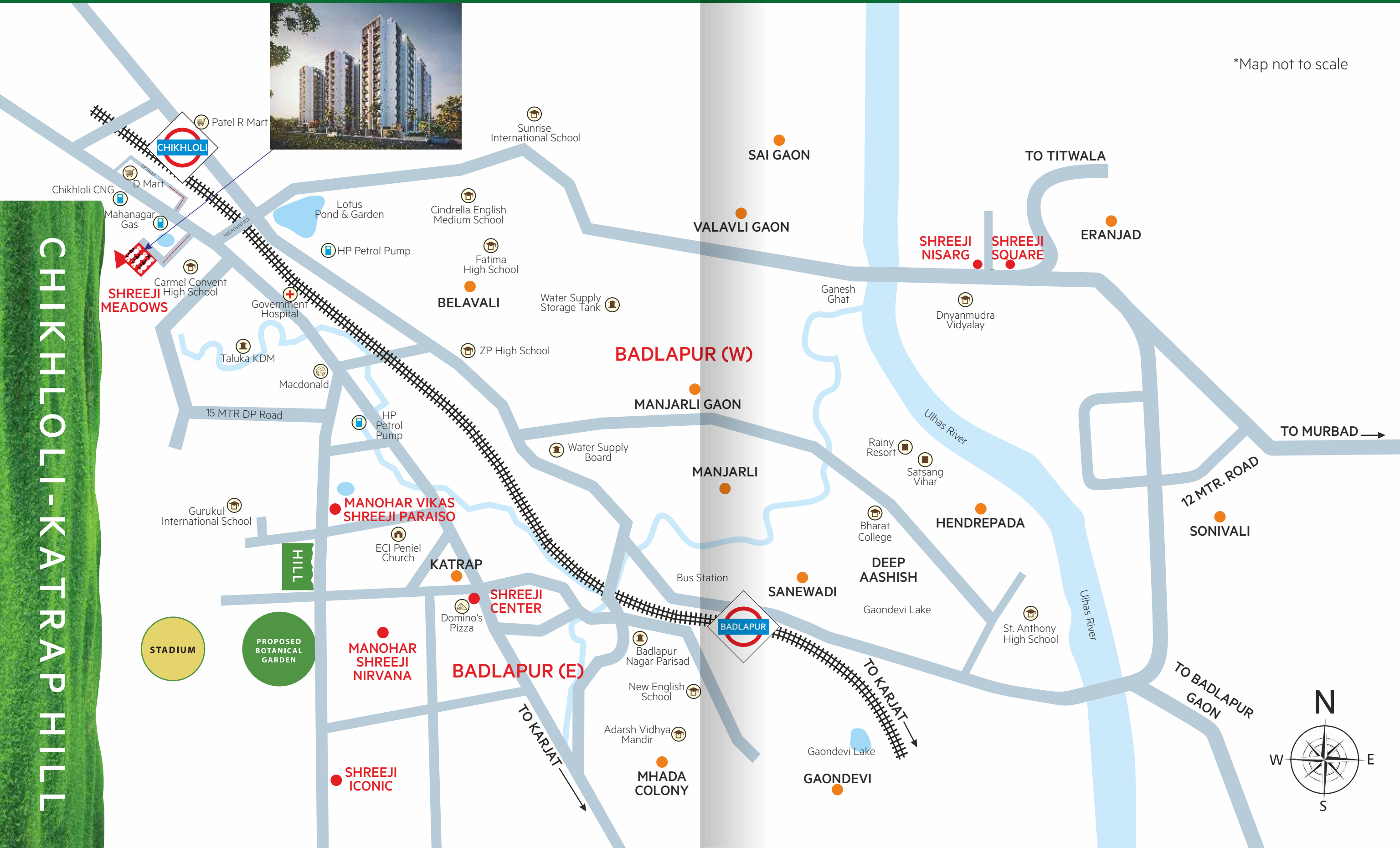
2 BHK with Dining Space

Note:

The 3D images are provided to enable the allottees to visualize the flat with furniture and furnishing. The furniture and furnishing are not provided by the developers and the final look and feel of the flat is dependent on various factors like type/style of interior, furniture layout etc. and the developers have no role in the same.

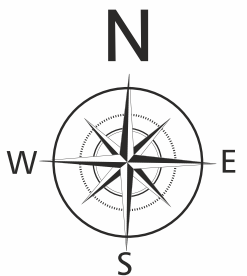
Landmark in the vicinity

The project's location adds a big convenience to the flat owners being situated close to MIDC, malls, renowned hospitals, educational institutions, cultural hub, entertainment and recreational areas that includes theaters, gardens, picnic spots and much more.



*Map not to scale

CHIKHLOLI-KATRAP HILL



Badlapur is surrounded by the natural beauty of hills & mountains. The badlapur have pleasant & dry atmosphere, good rail & bus connectivity, beautiful location, quiet neighbourhood, good education facility & affordable real estate prices. Badlapur is famous for its quiet surroundings. One can immediately feel its proximity to nature. These are very affordable and the best way to get around faster.

SHOPPING & ENTERTAINMENT

D Mart - 400 Mtrs
Reliance Smart Point - 800 Mtrs
Patel's R Mart - 1.5 KM

CONNECTIVITY

Chikhholi Station - 400 Mtrs* (Walkable less than 3 Min)
Badlapur Station - 2.7 Kms
Panvel Highway - 700 Mtrs
Ambarnath - Karjat Highway - 0 KM

RESTAURANTS & HOTELS

Mcdonald's - 700 Mtrs
Pizza Hut - 700 Mtrs
KFC - 700 Mtrs
Domino's Pizza - 1.7 KM
Hotel Venkeys - 300 Mtrs
Veg Restaurant - 1 KM
Monginis Cake Shop - 1.5 KM

EDUCATIONAL CENTERS

Carmel School - Adjacent
Gurukul International School - 600 Mtrs
Adarsh Vidyalay and College - 2 KM

HEALTH

Dentist - 100 Mtrs
Pharmacy - 200 Mtrs
Government Hospital - 300 Mtrs
Spandan Hospital - 1.5 KM
Ashirwad Hospital - 1.5 KM

OTHER BENEFITS

Petrol Pump - 0 KM
CNG Pump - 0 KM
Car Care - 0 KM
Sports Complex - Adjacent
Police Station - 500 Mtrs
SBI BANK - 1.3 KM
ICICI BANK - 1.5 KM
AXIS BANK - 1.9 KM
KOTAK BANK - 1.5 KM



Image for representative purpose only

A PROJECT BY



Site Address :

Survey No. 72/1, 73/1, 73/3, Adjacent to Indian Petrol Pump,
Near Carmel School, Katrap, Badlapur (East) - 421 503.



MahaRERA No. **P51700031453**
available at www.maharera.mahaonline.gov.in

Architect :

Urban Vastu Designer

RCC Consultant :

Aadhar Engineers

Legal Advisor :

Kiran B Banote

Creative Consultant :

Future Icon

Website :

www.shreejilifespaces.in

Email :

sales@shreejimeadows.com

Contact for Booking :

+91 77190 15666

Disclaimer : The visuals and information contained in this brochure are indicative of the kind of development that is proposed. Subject to approval of the authorities or in the interest of the continuing improvement, the Promoters/Developers reserve the right to change plans, specifications, or features, without prior notice or obligation. This brochure is issued for guidance only and does not constitute part of an offer or contract.